

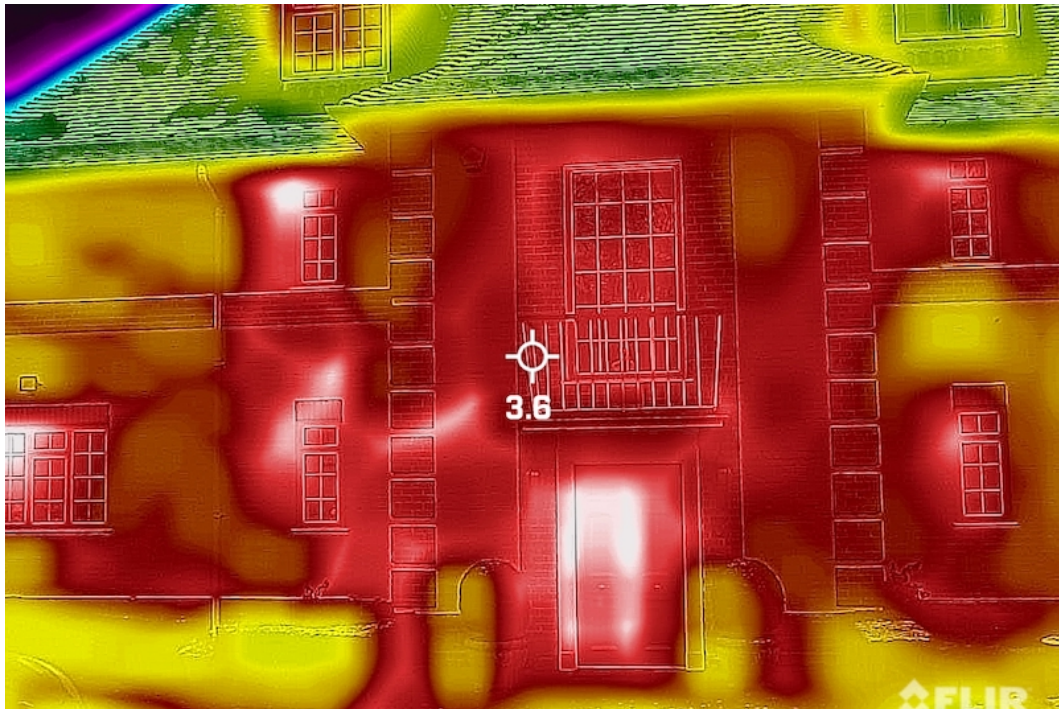
How much heat does YOUR Home lose?



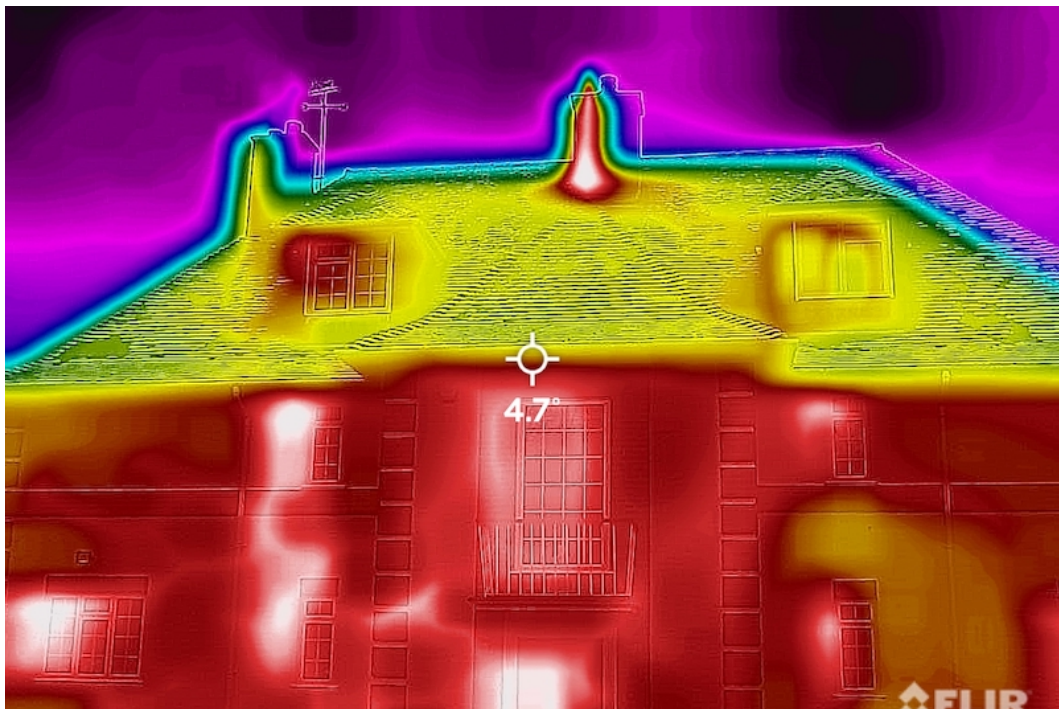
**THERMAL IMAGE OF A GRADE 2 LISTED HOME “HEATING THE SKY”
DURING VISIT FROM BEAST FROM THE EAST 2 - FEB 2021**

A thermal imaging camera reveals amount of heat pouring out of a 19th century Grade 2 Listed country home.

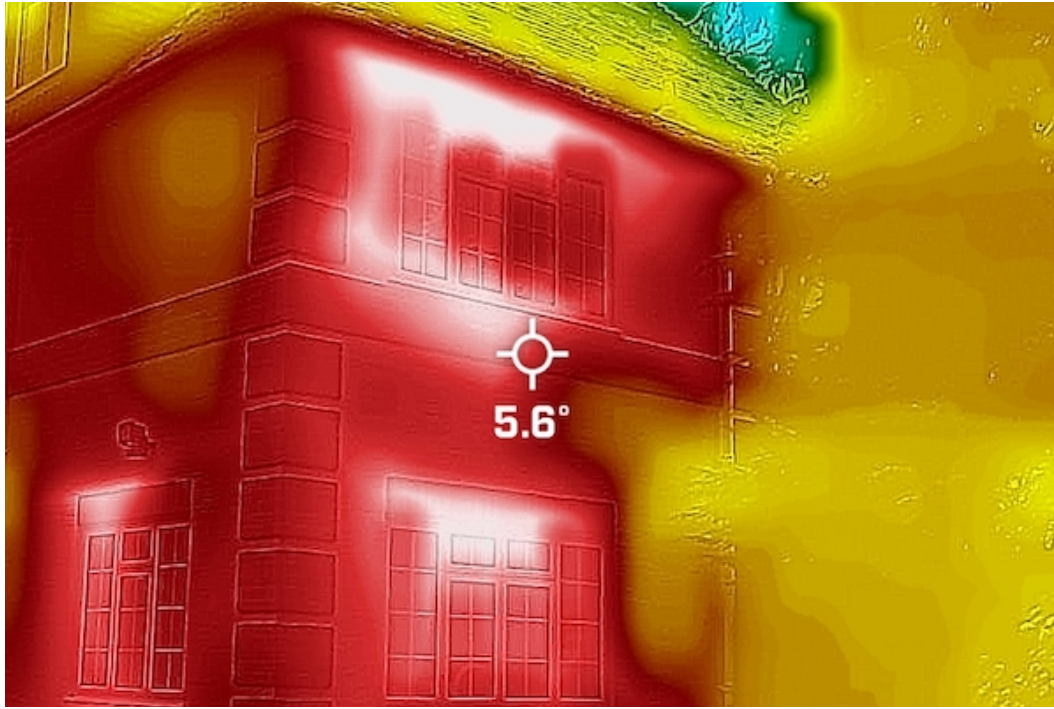
- Colourful images reveal the amount of heat being lost through walls, windows and roofs of British homes.
- In a typical British home, around one-third of the heat produced by its heating system is rapidly lost.
- A 2013 review showed the UK has the worst energy efficient homes in the EU.
- Insulation and modern double-glazing is more efficient at trapping this heat inside the home.
- Reducing heat loss from a home is better for the environment and less expensive for bill payers.
- Yellow and white areas indicate significant heat loss where as dark plum colours show cold spots.
- +3.9 is temperature of heat loss and -10.2c is the outside temperature at 16:30hrs on 13th February 2021.



BA1 - FRONT ELEVATION - HEAT LOSS FRONT DOOR

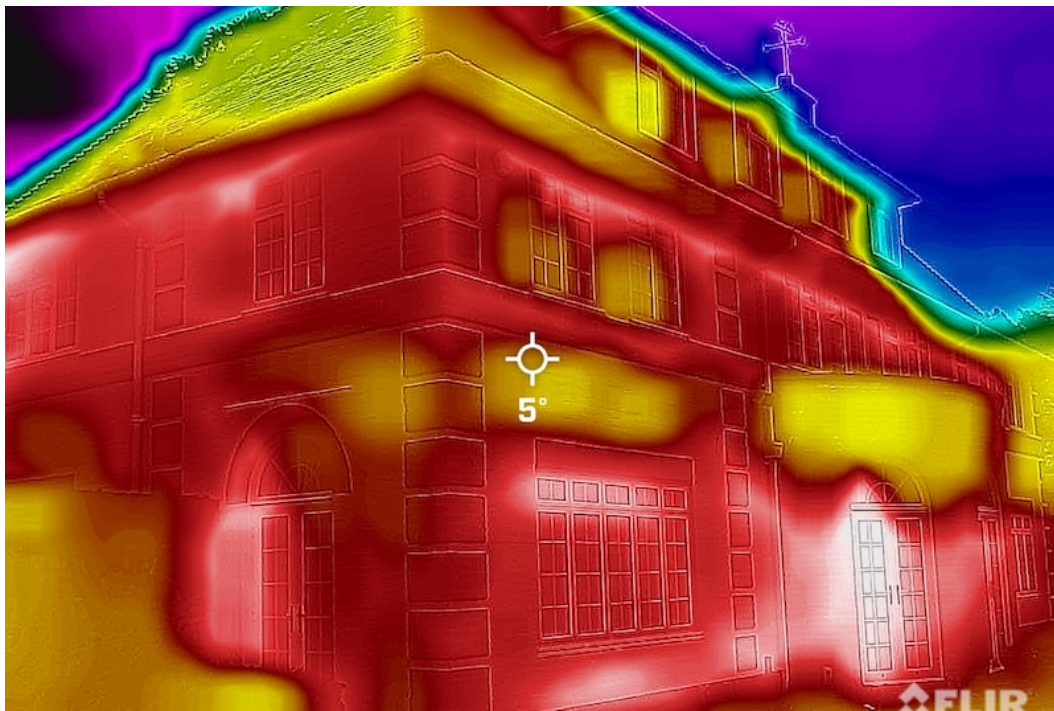


BA4 - HEAT LOSS CHIMNEY AND BATHROOM WINDOW - ROOF INSULATION GOOD

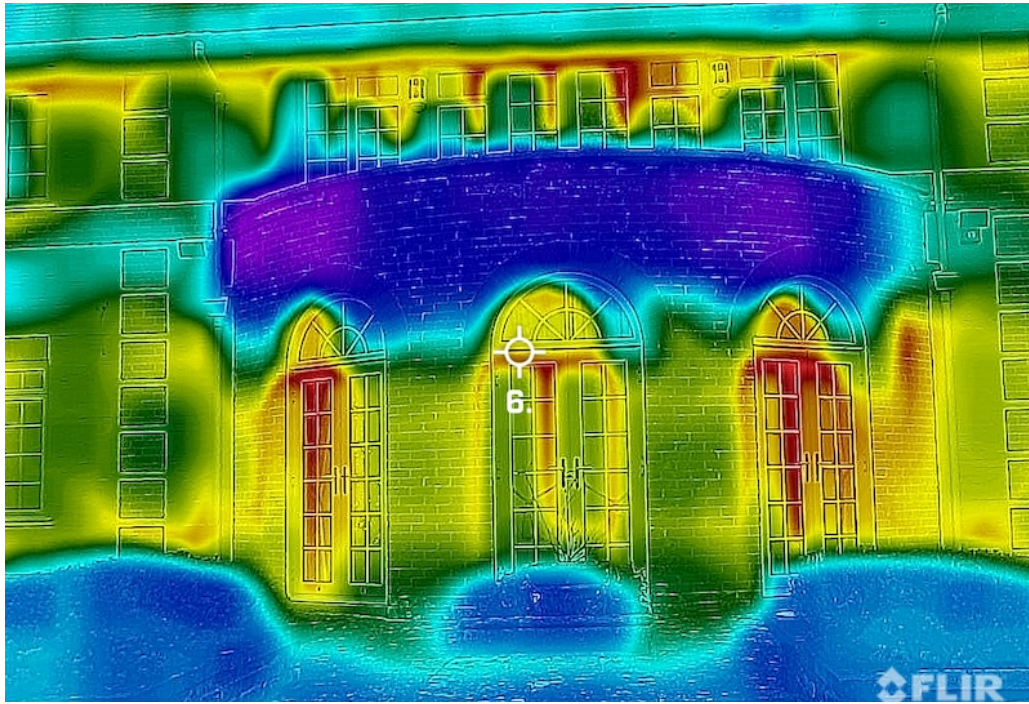


BA6 - HEAT LOSS WINDOWS

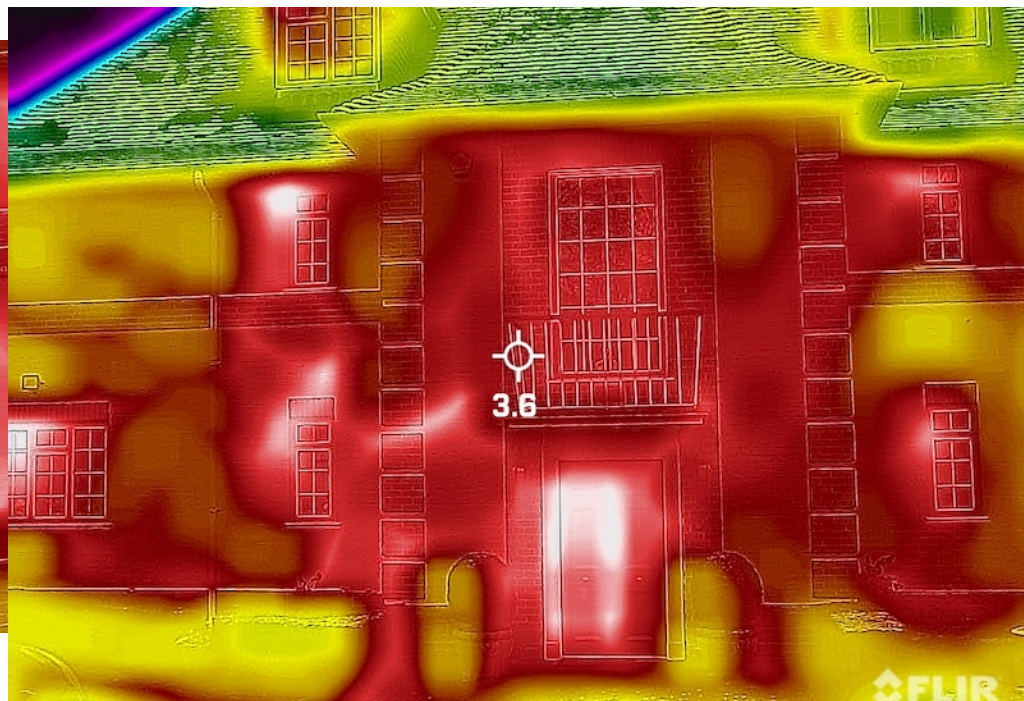
•



BA7 - HEAT LOSS PATIO DOORS AND BALCONY ?

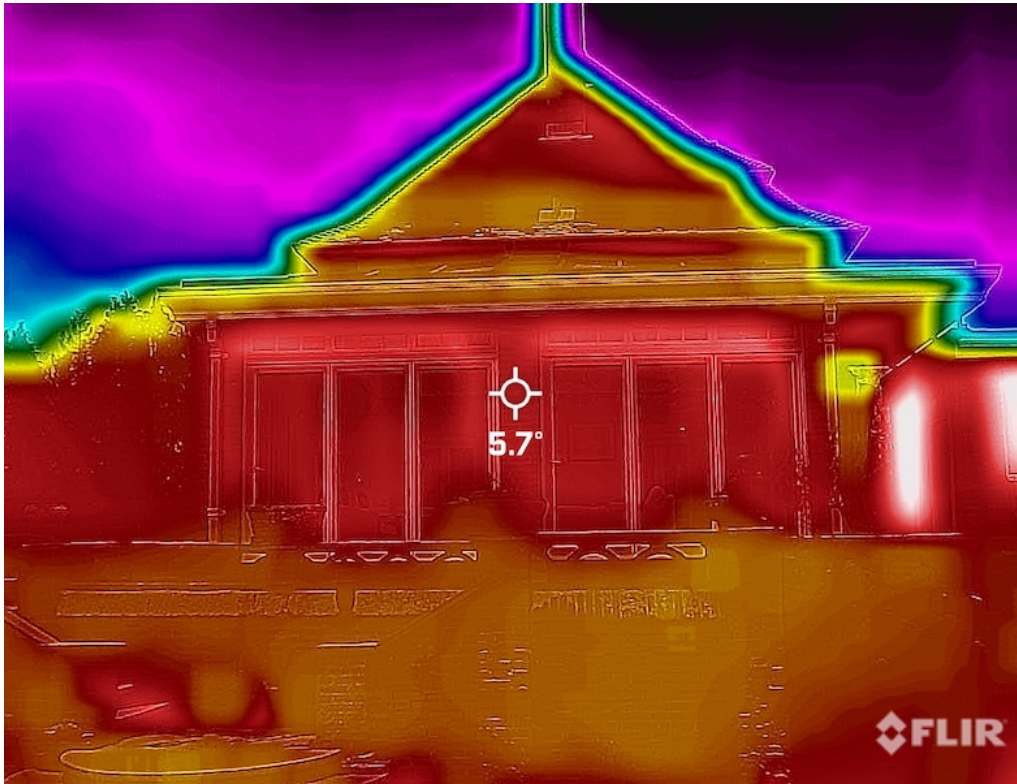


BA8 REAR OF HOUSE - BLUE = COLD AREA

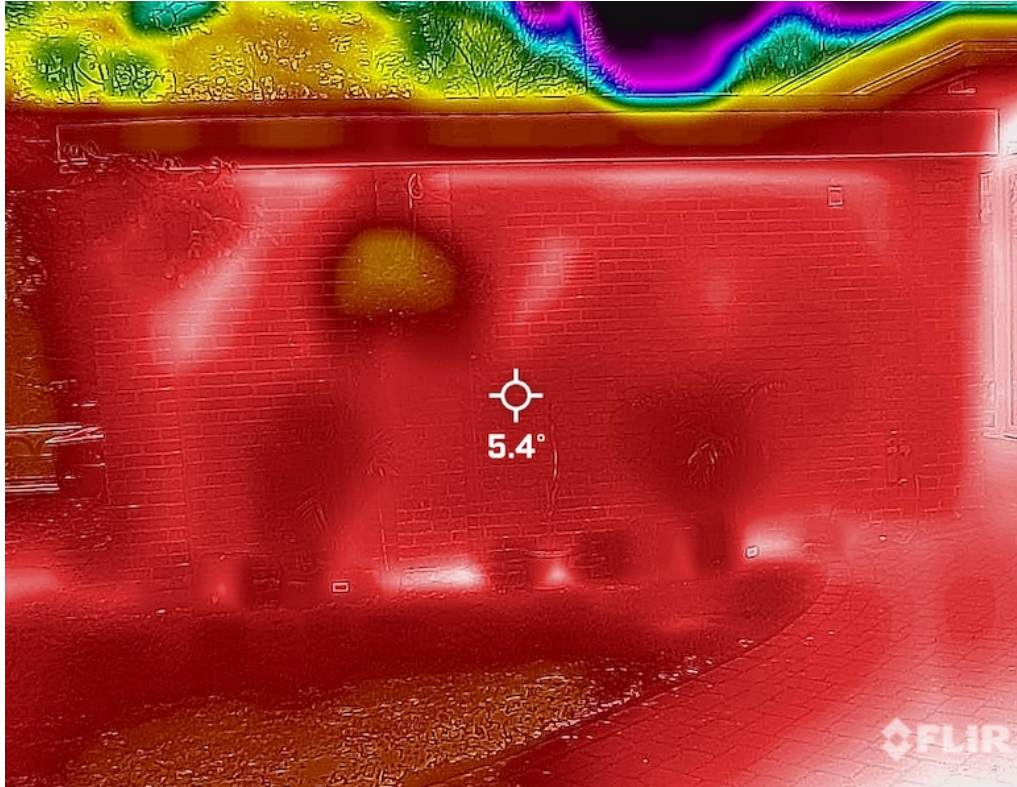


BA1 - FRONT ELEVATION - HEAT LOSS FRONT DOOR

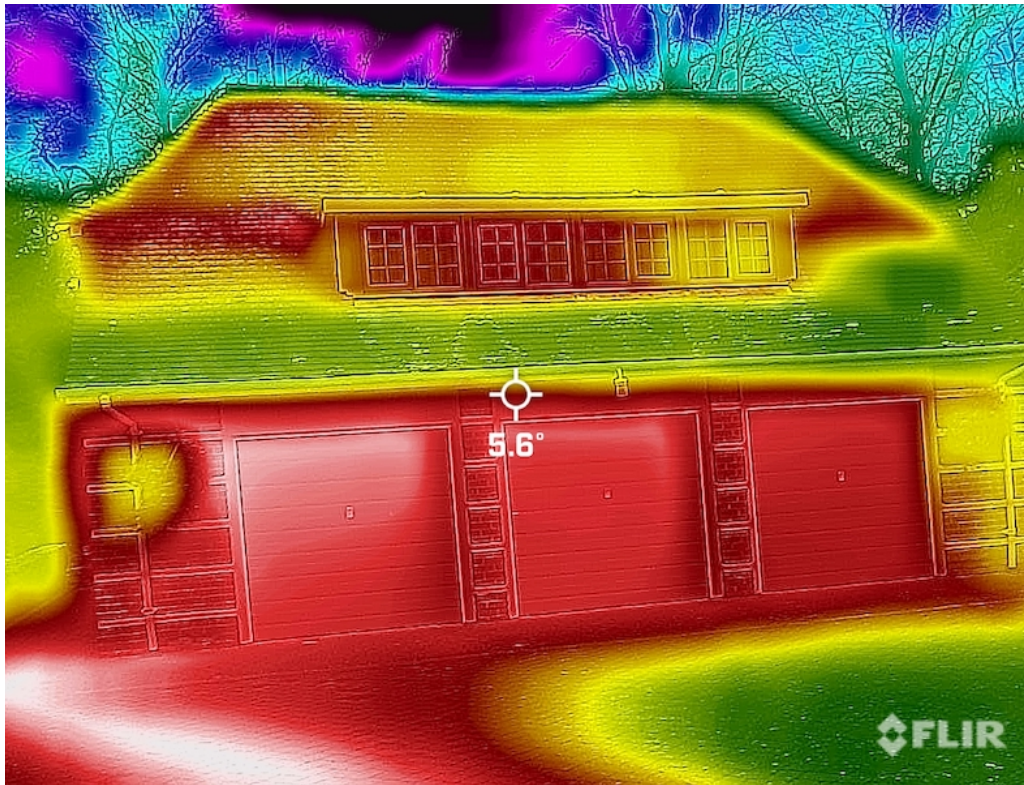
•
•



BA10 REAR OF HOUSE HEAT LOSS = 5.7C



BA12 - UTILITY ROOM - HEAT LOSS THROUGH WALL = 5.4C



BA14 - GARAGE - GOOD ROOF INSULATION - DOORS HEAT LOSS.